

**K** KNIGHTSCOPE

# K1 LASER

## OUTDOOR / INDOOR USE

---

### LIDAR SENSOR TECHNOLOGY... ROBUST AND PRECISE.

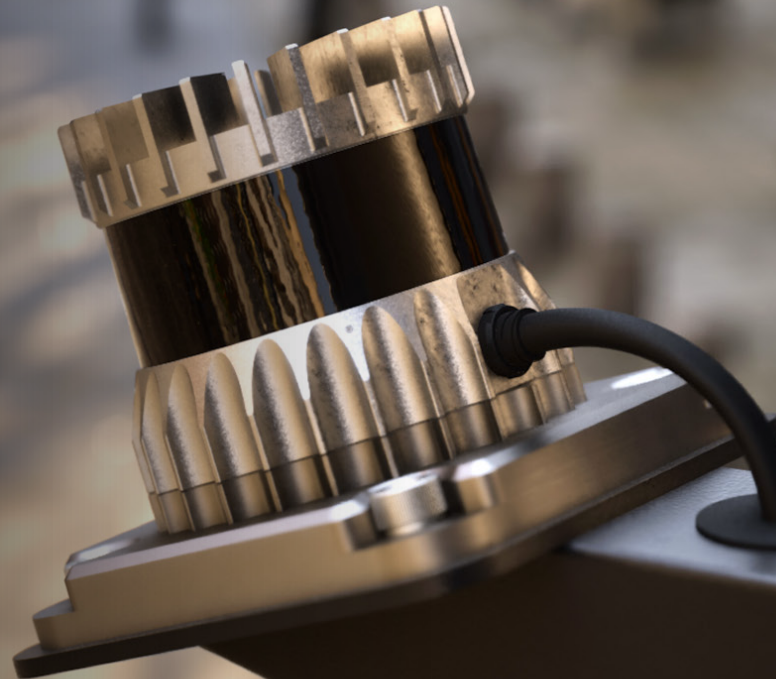
Whether it's indoors or outdoors, elevate the safety of your perimeter in protected zones with real-time alerts, a near zero false alarm rate and the capability to detect objects as small as a phone or a hand. Monitor fencelines and gates regardless of weather and lighting conditions, points of ingress/egress, and restricted/access-controlled areas. Get occupancy counts at a moment's notice for an entire space with traffic flow and dwell-time data.

- ▶ Detect Objects as Small as a Hand
- ▶ Track, Classify and Count Objects
- ▶ Works in Any Weather / Light
- ▶ Reduce Missed Events
- ▶ Reduce False Alarms
- ▶ Simple to Install

### TRACK PEOPLE & OBJECTS WITHOUT COMPROMISING PRIVACY

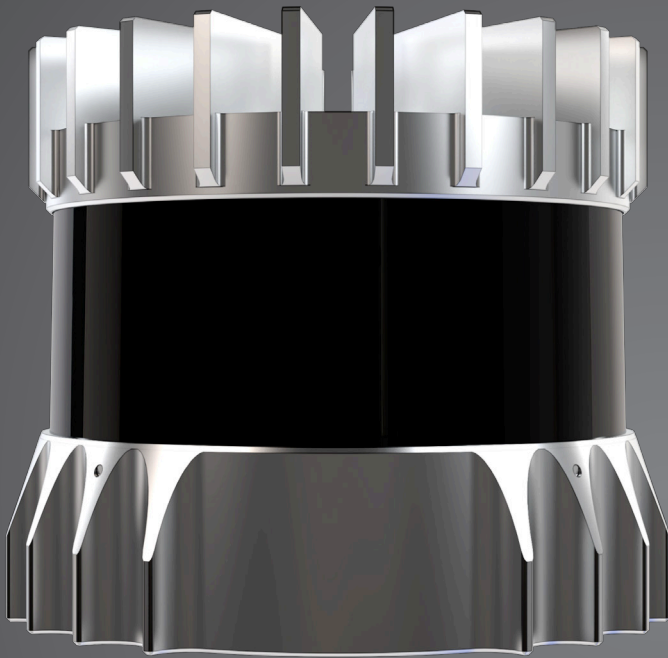
---

- ▶ Cover 360-degrees of complex spaces and unlimited custom zones.
- ▶ Obtain data-driven behavioral insights and guidance for action.
- ▶ Remove bias - no facial, racial, gender or other identifying informatio



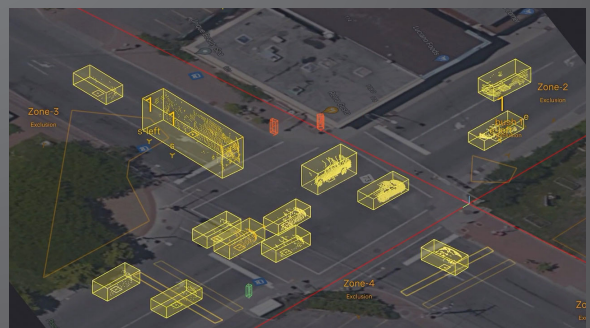
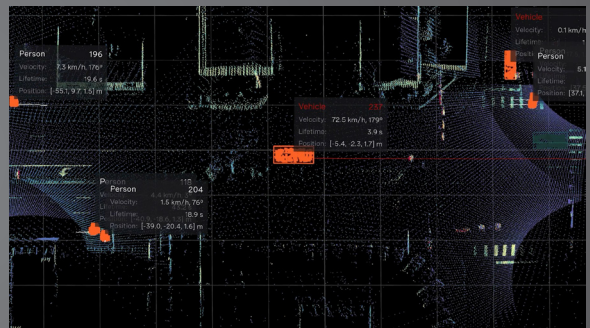
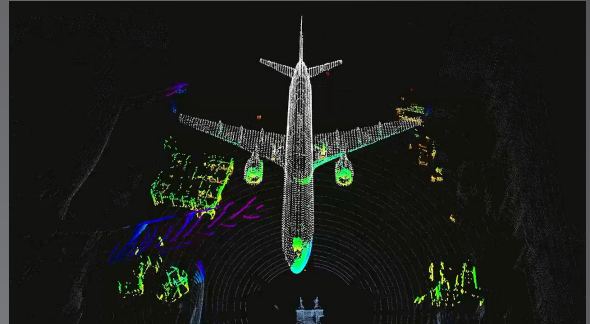
# K1 LASER

## OUTDOOR / INDOOR USE



## DEPLOY QUICKLY & SIMPLY

- ▶ Fewer sensors required than camera systems.
- ▶ Flexible mounting solutions for all environments.
- ▶ Add new sensors as needed.



## POWERFUL AND CAPABLE SCANNING

- ▶ Precision 3D scanning produces sharp focus on small details.
- ▶ Calibrated reflectivity to help eliminate dust and obscuring articles from data.
- ▶ Engineered for security, crowd analytics and traffic monitoring.