

K1

BLUE LIGHT TOWER

OUTDOOR USE

Securing the places people live, work, study and visit.

- ▶ Schools
- ▶ Airports
- ▶ Casinos
- ▶ Commercial Properties
- ▶ Hospitals
- ▶ Public Parks and Trails
- ▶ Parking Lots
- ▶ Retail
- ▶ Public Transit Stations

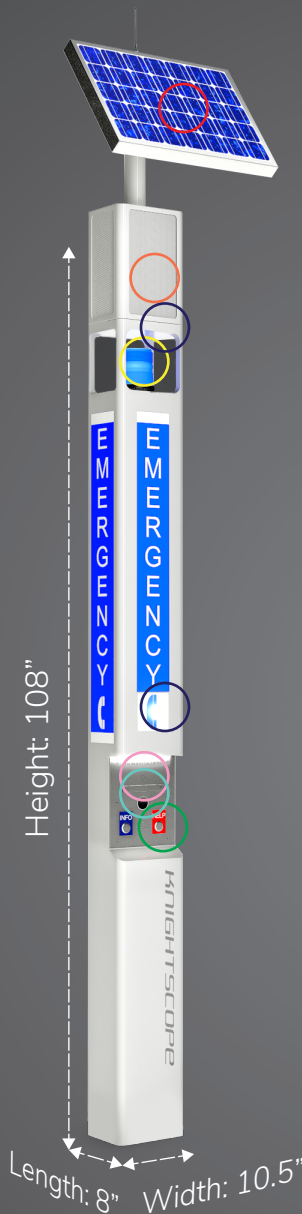
UNIQUE BENEFITS

Engineered to be either hardwired or a completely wireless solution, the K1 Blue Light Tower is ideal for enhancing public security on college campuses, parking lots, transit stations, remote bike paths and trails, and any place where additional lighting and added safety and security are needed.

KEY FEATURES

- ▶ Available in AC or Solar with battery back-up to provide uninterrupted power.
- ▶ Verizon® and AT&T® networked certified voice module
- ▶ The latest 4G certified voice module
- ▶ Weather-proof, tamper-proof steel housing protects the system's electronics insuring reliability and safety to the caller when needed
- ▶ Duplex Wireless Calling
- ▶ Highly visible blue LED light positioned on top of the tower provides constant blue light making it easy to locate
- ▶ Faceplate is illuminated dusk to dawn
- ▶ Area light illuminated when call button is pushed
- ▶ Call location identifier
- ▶ ADA-compliant
- ▶ Optional multi-button dialing
- ▶ Over-the-Air (OTA) System Administration and Maintenance

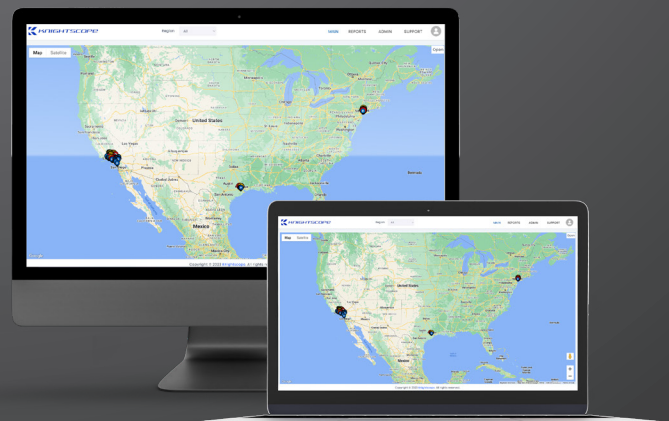




- Speakers
- Call Button
(Two button add-on option)
- Solar Power Source
- Mass Notification Speakers
(Add-On option)
- Strobe Light
- LED Area and Face Plate Lights
- Faceplate Camera
(Add-On option)

USER INTERFACE

Includes self-diagnostic, alarm monitoring software called **KnightScope Emergency Management System**. The program provides system owners daily email reports on the operational status of their system. Text messaging and real-time graphical map available as an add-on option.



K1

BLUE LIGHT EMERGENCY PHONE

OUTDOOR / INDOOR USE

Securing the places people live, work, study and visit.

- ▶ Schools
- ▶ Airports
- ▶ Casinos
- ▶ Commercial Properties
- ▶ Hospitals
- ▶ Public Parks and Trails
- ▶ Parking Lots
- ▶ Retail
- ▶ Public Transit Stations

UNIQUE BENEFITS

Engineered to be either hardwired or a completely wireless solution, the K1 Blue Light E-Phone is ideal for applications where communications must be mounted on a wall or post in areas such as parking lots and garages, airports, transit stations and college campuses. The K1 Blue Light E-Phone is ideal for enhancing public security by providing clear voice-to-voice communication, using a cellular network or standard telephone line.

KEY FEATURES

- ▶ Available in AC or Solar with battery back up to provide uninterrupted power.
- ▶ Verizon® and AT&T® networked certified voice module
- ▶ Duplex Wireless Calling
- ▶ Weather-proof, tamper-proof steel housing protects the system's internal electronics, ensuring reliability and safety to the caller when needed.
- ▶ Highly visible blue LED light positioned near the top of the unit faceplate
- ▶ Call location identifier
- ▶ ADA-compliant
- ▶ Optional multi-button dialing
- ▶ Faceplate is illuminated dusk to dawn
- ▶ Over-the-Air (OTA) System Administration and Maintenance



K1

STATIONARY OUTDOOR / INDOOR USE

BLUE LIGHT EMERGENCY PHONE



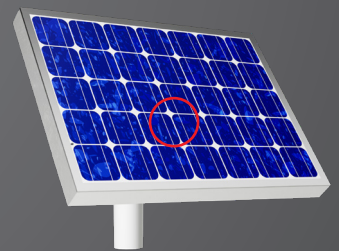
○ Strobe Light

○ Speakers

○ Call Button
(Two button add-on option)

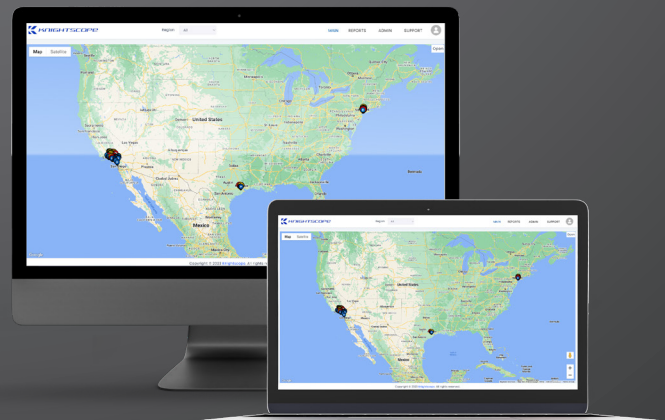
○ Solar Power Source
(Add-on option)

○ Faceplate Camera
(Add-on option)



USER INTERFACE

Includes self-diagnostic, alarm monitoring software called **KnightScope Emergency Management System**. The program provides system owners daily email reports on the operational status of their system. Text messaging and real-time graphical map available as an add-on option.



K1

CALL BOX

OUTDOOR USE

Securing the places people live, work, study and visit.

- ▶ Bridges
- ▶ Highways
- ▶ Military
- ▶ Parks
- ▶ Remote Areas
- ▶ Trails
- ▶ Beaches

UNIQUE BENEFITS

The classic style K1 Call Box originally designed for roadside applications is ideal for rugged and remote environments.

KEY FEATURES

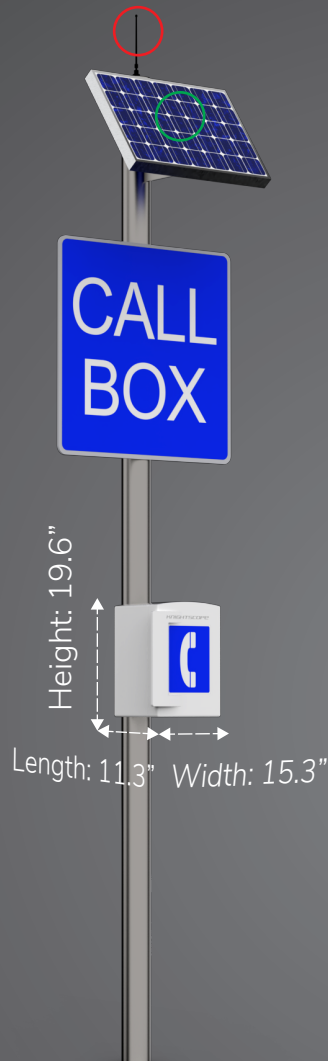
- ▶ Provides Caller Identification
- ▶ Illuminated Interior Control Panel
- ▶ Verizon and AT&T Certified
- ▶ Certified Iridium Satellite option
- ▶ Tamperproof & Weatherproof Lexan Housing
- ▶ TTY Option
- ▶ Hands Free or with Handset
- ▶ Remote Programming Capability
- ▶ Solar Powered or AC with Rechargeable Battery
- ▶ Maintenance Alerts Sent to Email
- ▶ Hardware available for post mount
- ▶ Over-the-Air (OTA) System Administration and Maintenance





K1

CALL BOX

STATIONARY OUTDOOR USE

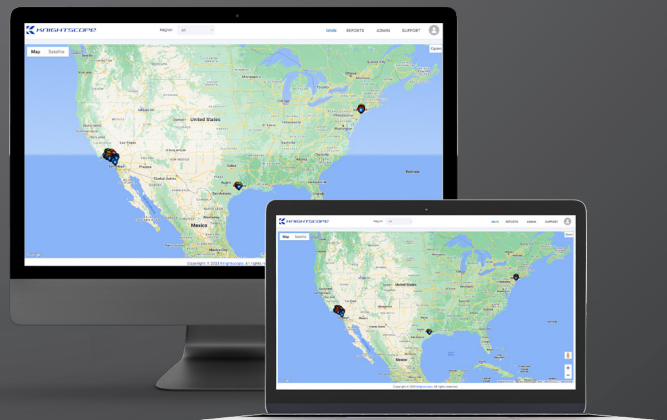


-  Solar Power Source
(Add-on option)
-  Satellite Calling
(Add-on option)
-  TTY Pad
(Add-on option)



USER INTERFACE

Includes self-diagnostic, alarm monitoring software called **Knightscope Emergency Management System**. The program provides system owners daily email reports on the operational status of their system. Text messaging and real-time graphical map available as an add-on option.



K KNIGHTSCOPE

K1

RETROFIT KIT

Securing the places people live, work, study and visit.

Easy to install and maintain, the 4G ready voice retrofit kit is an efficient and cost-effective solution for:

- ▶ Eliminating costly POTS lines
- ▶ Utilizing existing electrical.
- ▶ Converting traditional wireline systems to Knightscope latest 4G ready technology.

Retrofit Kits are available for:

- ▶ Code Blue
- ▶ GAI-Tronics
- ▶ Talk-A-Phone
- ▶ And Others

UNIQUE BENEFITS

No more replacing discontinued call boxes at great expense, The Knightscope Retrofit Kit is designed to make your existing emergency communication system compatible with our newer, more advanced hardwired and wireless systems, so you can save money not only on hardware but on the costly infrastructure needed to re-wire or re-cable your current or expanding public safety program.

KEY FEATURES

- ▶ Faceplate with our fully integrated electronics package
- ▶ Bright blue LED light
- ▶ Battery back-up
- ▶ One year manufacturer's warranty
- ▶ Optional multi-button dialing
- ▶ Over-the-Air (OTA) System Administration and Maintenance



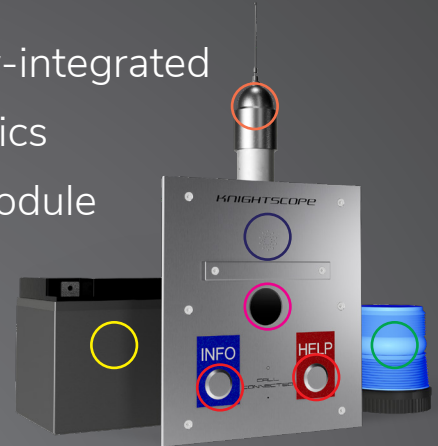
K1

RETROFIT KIT

STATIONARY

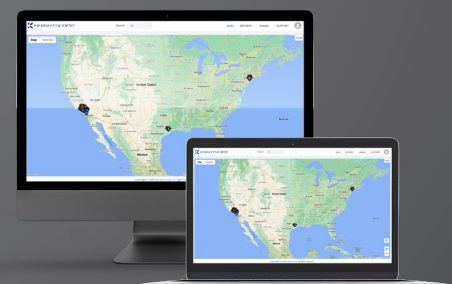


- Strobe Light
- Faceplate with fully-integrated wiring and electronics
- 4G Voice & Data module
- Battery back-up
- Speakers
- Call Button
(Two button add-on option)
- Faceplate Camera
(Add-on option)



USER INTERFACE

Includes self-diagnostic, alarm monitoring software called **Knightscope Emergency Management System**. The program provides system owners daily email reports on the operational status of their system. Text messaging and real-time graphical map available as an add-on option.



BATTERY

Voltage	12 V
Capacity	17 Ah

STROBE

Colors	Blue
	White

RADIO

4G LTE	Certified for Voice & Data
--------	----------------------------